



CUSTOM MADE
DRYSUIT

Atlan Productions inc.

120 Rotterdam Street,
Saint-Augustin-de-Desmaures
(QC) G3A 1T3

www.atlaninc.com



Here are the important points to complete the custom measurements chart :

1. You must use **our chart** to send us your measurements.
 2. Measurements should be taken **without clothing**, either in underwear or swimsuits.
(Other companies ask to take measurements with the clothes people will wear under their suit, which we don't.)
 3. Measurements should be taken in **INCHES**, not cm.
 4. You must indicate your **height and weight**, because there could be a surcharge to the price of the custom made.
 5. You must indicate the **options** you want on your outfit, as this can influence the way you make the pattern.
 6. If possible, send us profile and face **photos**, we don't need to see the face, you can wear tight-fitting clothes.
 7. Here is a **tip**, to take the length of the legs, you can put a ruler perpendicular to the ground at the level of the crotch, this will give you a starting point to take this measurement more easily.
- * You are responsible for the accuracy of the measurements.



INFORMATION

Client's name:

Men

Women Bra size:

Height:

Weight:

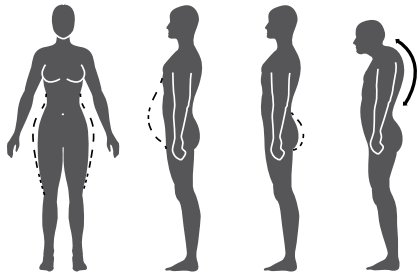
Suit model code:

Color:

OFF CHART SIZE

When customers have unusual body sizes (e.g. big drops in belly, etc.) please make sure picture without head are attached to the order.

Please check box:



* In the case of atypically shaped size, photos without the head can also be attached to the chart to aid in the development of the pattern.

TYPE OF ADJUSTMENT

- California
- Normal
- Loose

OPTIONS (Refer to the next page for the description of the options)

Pockets	Zippers	Pads	Seals
PO-10	BR-10	PV-20	NSP
KN-24	FL-10	PC-12	SC-09
PO-99	FL-05	KN-02	SD-02
PO-98		KC-02	LNWS
PO-97		PF-02	LNS
Others	Valves	Hose	LWS
DH-01	VK	LP-1	
SUS	VI/VE		

Size and location of pockets and valves position, if applicable :

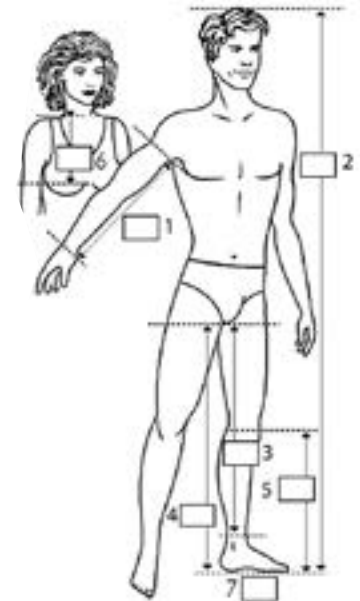
MEASUREMENT

Measurement

- A Around forehead at the biggest
- B Around neck at the smallest point
- C Armpit around shoulder arm at 45°
- D Biceps at the biggest
- E Around elbow at bone
- F Around forearm at the biggest
- G Around wrist just above bone
- H Shoulder to crotch back to shoulder
- I Around chest or bust at the biggest
- J Around waist at the belly button
- K Around hips at butt area
- L Around thigh at crotch level
- M Around knee cap
- N Around calf at biggest
- O Around ankle just above bone

Length measurement

- 1 Arms length from armseam to wrist bone
- 2 Height from head to feet
- 3 Length from crotch to ankle bone
- 4 Length from crotch to floor
- 5 Length from knee to floor
- 6 Length from shoulder bone to bust tip
- 7 Shoe sizes



OPTIONS

Pockets (Specify position)

- PO-10 Neoprene utility pocket with velcro closure flap 6"X8"*
- KN-24 Knife pocket 3"X8"*
- PO-99 Welding rod pocket 3"X12"
- PO-98 Kangaroo pouch/hand warmer pocket
- PO-97 Forearm pocket with open ends 3"X4"

*Standard sizes provided if not stated otherwise by client

Zippers

- BR-10 8,5" convenient zipper
- FL-10 Exterior convenient zipper flap
- FL-05 Exterior zipper flap on main zipper

Pads

- PV-20 Commercial vulcanized knee pads
- PC-12 Vulcanized elbow pads
- KN-02 Kevlar commercial knee pads
- KC-02 Kevlar commercial elbow pads
- PF-02 Platisoft butt pads

Seals

- NSP Neck seal protector
- SC-09 Double neck seal Double neck seal
- SD-02 Double wrists seals (sandwich seals)
- LNWS Latex neck and wrists seals
- LNS Latex neck seal
- LWS Latex wrists seal

Hose

- LP-1 34" low pressure hose

Valve

- VK Kit (intake and exhaust)
- VI/VE Intake (VI) or exhaust (VE)

Others

- DH-01 7 mm N-2-S neoprene dry hood attached to the suit, face seal in 4 mm nylon/smooth skin
- SUS Suspenders

VALVE POSITION

MODEL	A	B	C	D	E
ACD-700	✓	Opt.	Opt.	Opt.	-
NSC-40BZ	✓	Opt.	Opt.	-	-
NSC-40FZ	-	-	-	-	✓
NDS-07	✓	Opt.	Opt.	Opt.	-

ADJUSTMENTS

MODEL	California	Normal	Loose
ACD-700	✗	✓	✓
NSC-40BZ	✓	✓	✓
NSC-40FZ	✗	✓	✓
NDS-07	✓	✓	✓

CALIFORNIA

Fits the person tightly, but it is possible to wear at-shirt and shorts underneath.

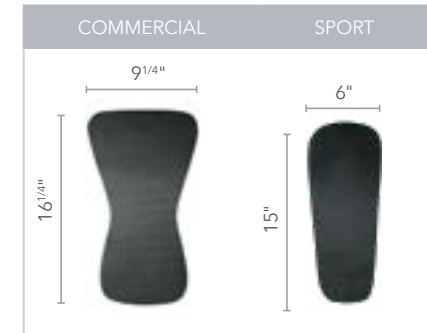
NORMAL

Loose enough to wear a lycra® underwear or a sweater and pants underneath.

LOOSE

This fitting is recommended for commercial divers and cold sensitive people. The suit is loose enough to allow the person to wear warm clothes underneath and/or a thick underwear.

KNEE PADS



SURCHARGES FOR CUSTOM MADE DRY SUIT

Custom charge 160\$
(irrespective of model)

Weight **or** height..... Custom charge +15% of the price of the suit
Men: 6'2" - 6'4" **or** 226-300 lbs
Women: 5'10" - 6'1" **or** 180-230 lbs

Weight **or** height..... Custom charge +20% of the price of the suit
Men: over 6'4" **or** 300 lbs
Women: over 6'1" **or** 230 lbs

Weight **and** height..... Custom charge +35% of the price of the suit
Men: more than 6'4" **and** 226 lbs
Women: more than 6'1" **and** 180 lbs